

SUPPORTING INFORMATION

Rubber-silica nanocomposites obtained by *in-situ* sol-gel method: particle shape influence on the filler–filler and filler-rubber interactions.

R.Scotti^{*a}, L. Wahba^{a,b}, M. Crippa^a, M. D'Arienzo^a, R. Donetti^c, N. Santo^d, F. Morazzoni^a.

a Dip. Scienze dei Materiali, INSTM, University of Milano-Bicocca, Via 55 R. Cozzi 53, 20125 Milano, Italy. Roberto.Scotti@unimib.it

b Corimav Pirelli, Via R. Cozzi 53, 20125 Milano, Italy.

c Pirelli Tyre SpA, Viale Sarca, 222, 20126 Milano, Italy.

d CIMA Interdepartmental Center of Advanced Microscopy, University of Milano, Via Celoria, 26, 20133Milano, Italy.

AUTHOR EMAIL ADDRESS Roberto.Scotti@unimib.it

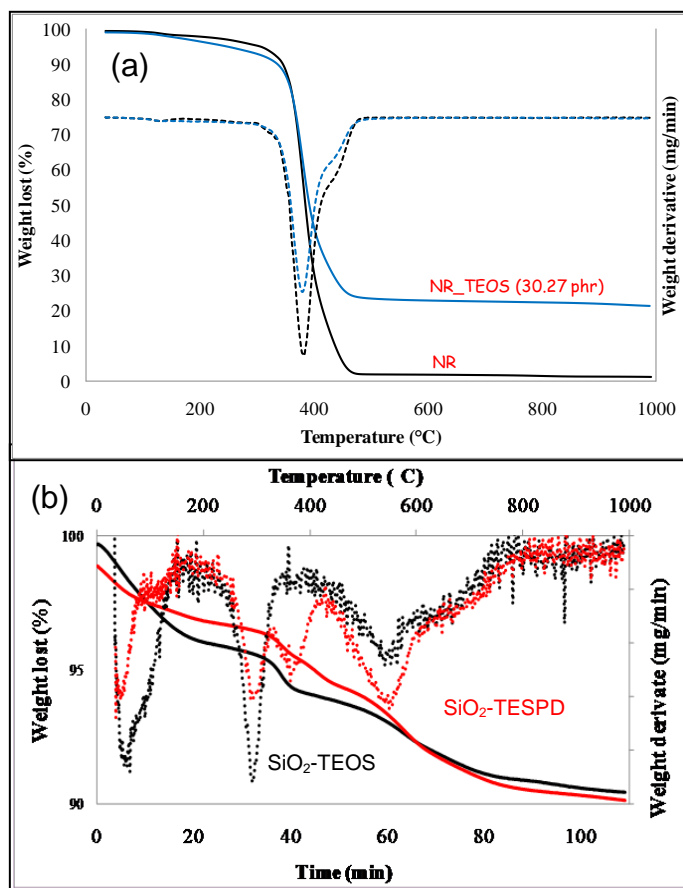


Figure S1 TGA profiles of (a) NR-TEOS composite in air flow in comparison with NR; (b) SiO₂-TESPD and SiO₂-TEOS powders in nitrogen flow.

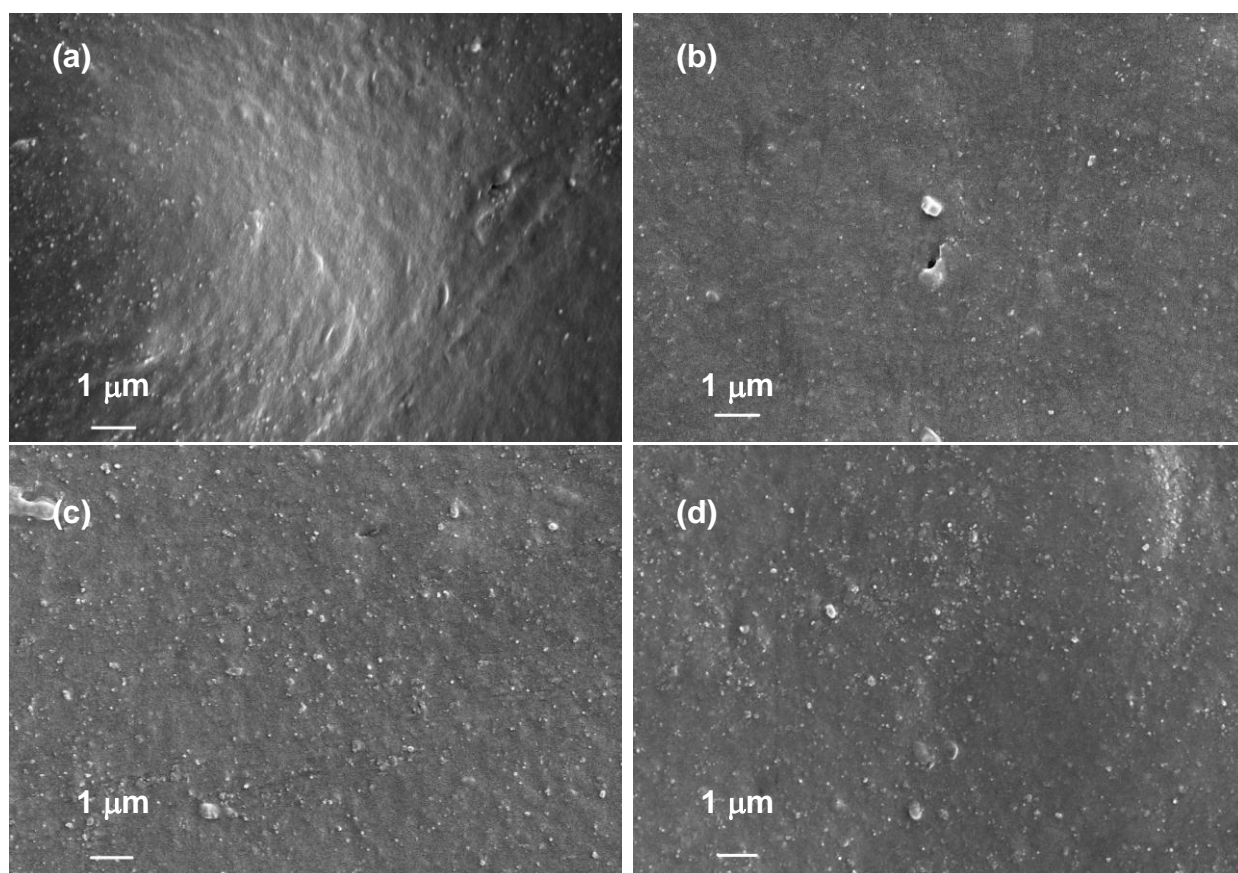


Figure S2 SEM micrographs of vulcanized composites (a) V-NR-TEOS; (b) V-NR-TMSPM-2; (c) V-NR-TESPD-2; (d) V-NR-TESPT-2.

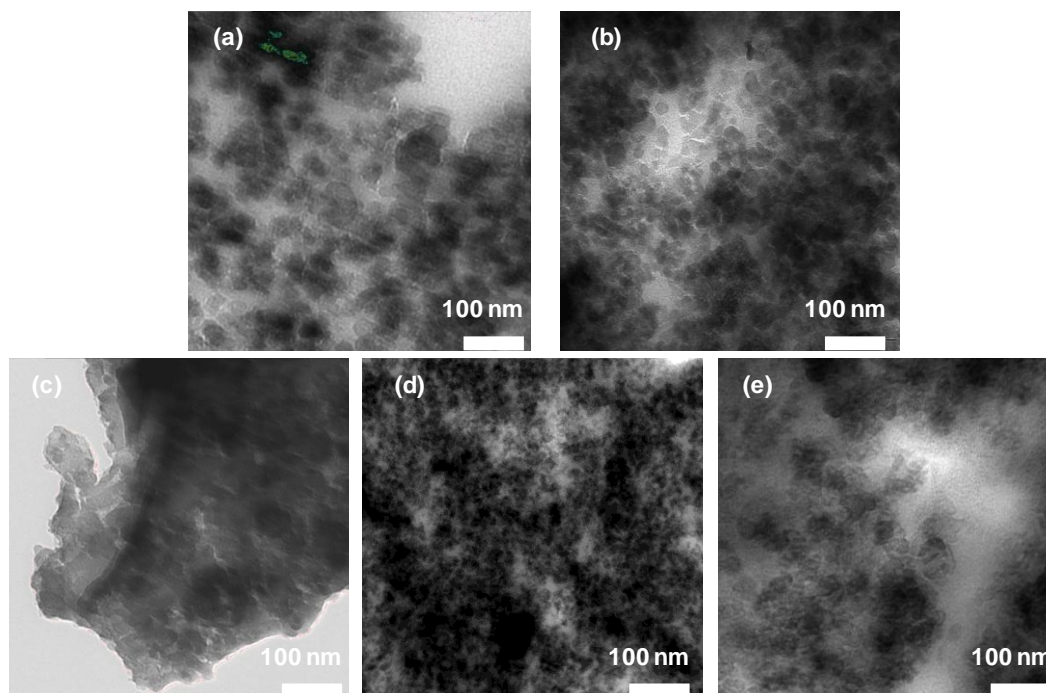


Figure S3 TEM images of vulcanized a) V-NR-SiO₂; b) V-NR-TEOS; c) V-NR-TESPD-2; d) V-NR-TESPT-2; e) V-NR-TMSPM-2.

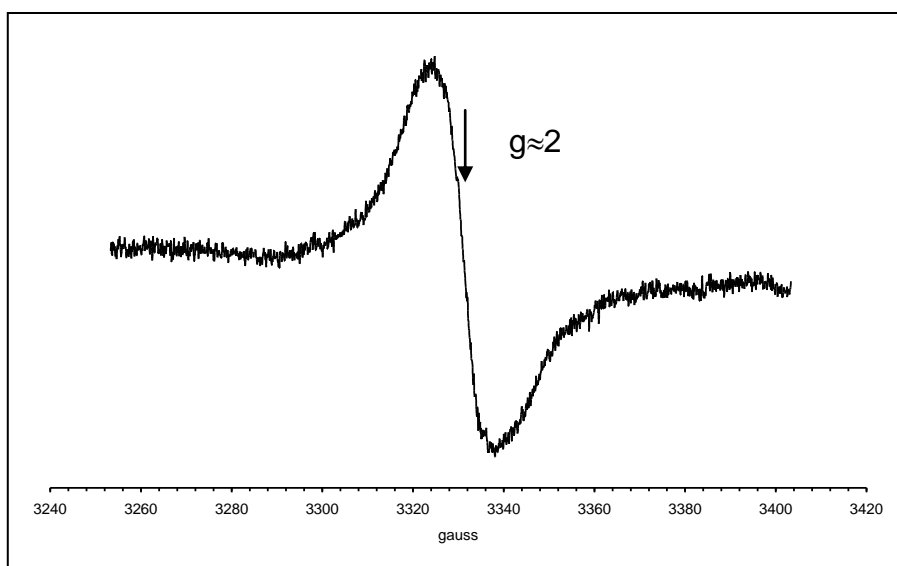


Figure S4 ESR spectrum of NR-TMSPM-2 composite.