

Supporting information

Triindole-Cored Star-Shaped Molecules for Organic Solar Cells

Zhen Lu,^{a,b} Cuihong Li,^{*a} Tao Fang,^a Guangwu Li^a and Zhishan Bo^{*a}

^a Beijing Key Laboratory of Energy Conversion and Storage Materials, College of Chemistry, Beijing Normal University, Beijing 100875, China. Fax: +86 10 62206891; Tel: + 86 10 62206891; E-mail: licuihong@bnu.edu.cn; zsbo@bnu.edu.cn

^b College of Chemistry and Chemical Engineering, ShanXi DaTong University, DaTong 037009, China

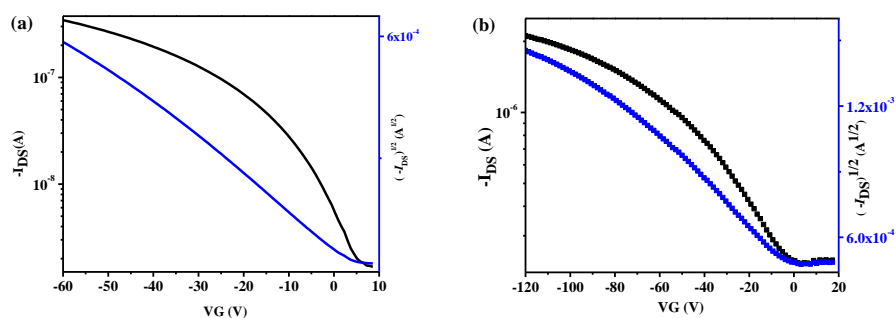


Figure S1. The transfer characteristic curves of spin-coated films of SM-1 (a) and SM-2 (b) on OTS-treated Si/SiO₂ substrates.

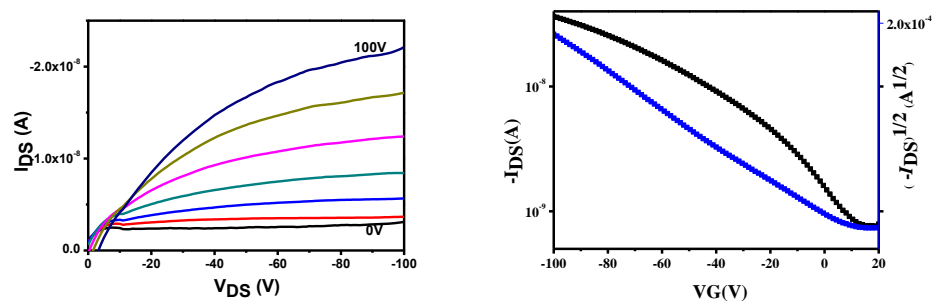


Figure S2. The output and transfer characteristic curves of the blend films of SM-1 and PC₇₁BM on OTS-treated Si/SiO₂ substrates. $\mu = 1.13 \times 10^{-5} \text{ cm}^2 \text{ V}^{-1} \text{ s}^{-1}$

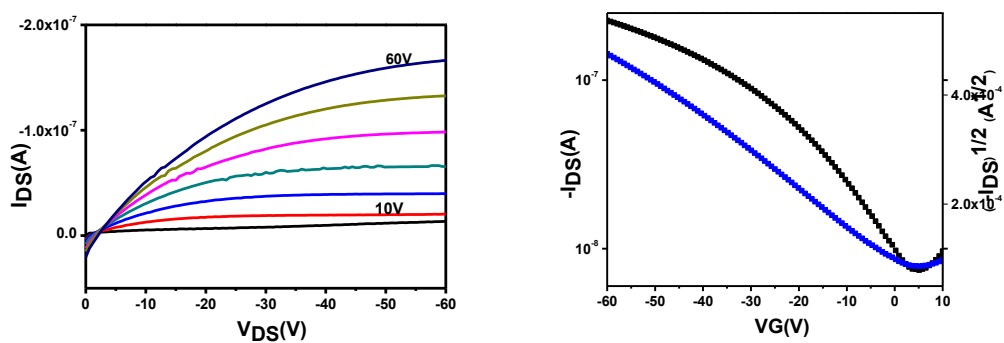


Figure S3. The output and transfer characteristic curves of the blend films of **SM-1** and PC₇₁BM on OTS-treated Si/SiO₂ substrates. $\mu = 2.05 \times 10^{-4} \text{ cm}^2 \text{ V}^{-1} \text{ s}^{-1}$

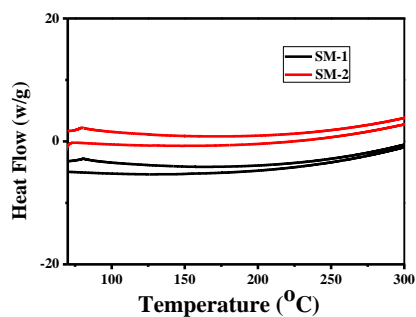


Figure S4. DSC traces of SM-1 and SM-2 measured at a heating rate 20 °C/min and a N₂ flow of 50 mL/min.

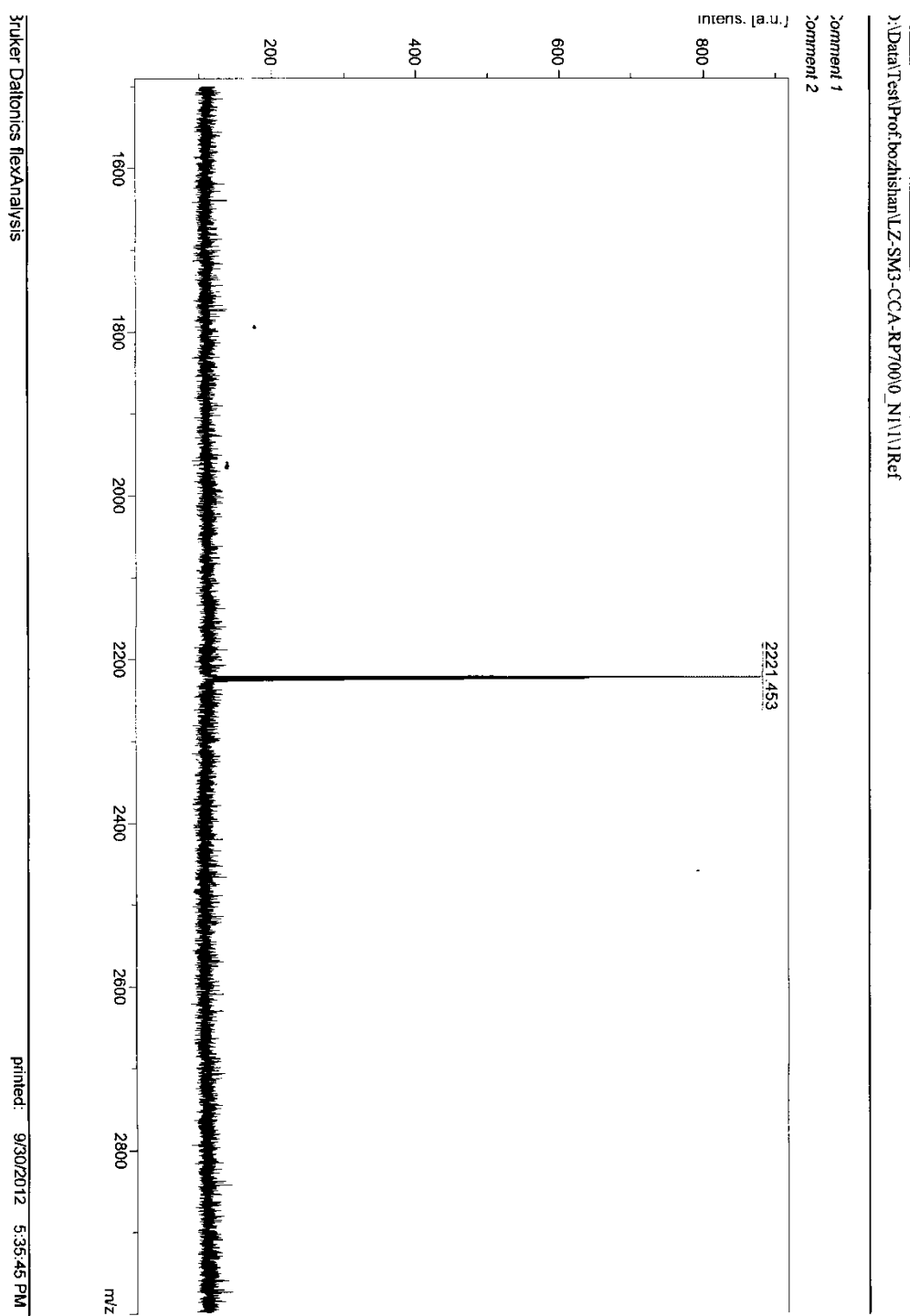
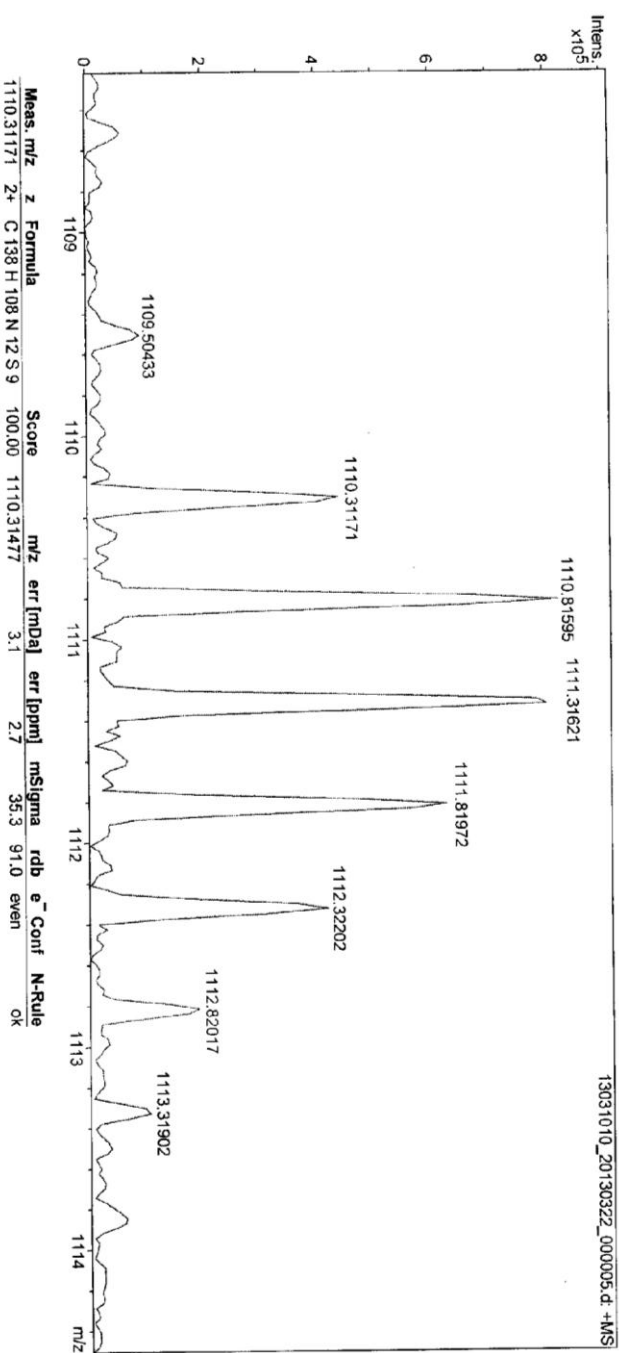


Figure S5. The MAILD-TOF spectra of SM1

Peking University Mass Spectrometry Sample Analysis Report

Analysis Info
Analysis Name 13031010_20130322_0000005.d
Sample 20130322-Ivan
Comment ESI Positive

Acquisition Date 3/22/2013 4:25:18 PM
Instrument Bruker Apex IV FTMS
Operator Peking University



Bruker Compass DataAnalysis 4.0

printed: 3/22/2013 4:35:53 PM

Page 1 of 1

Figure S6. The high resolution MS of SM1

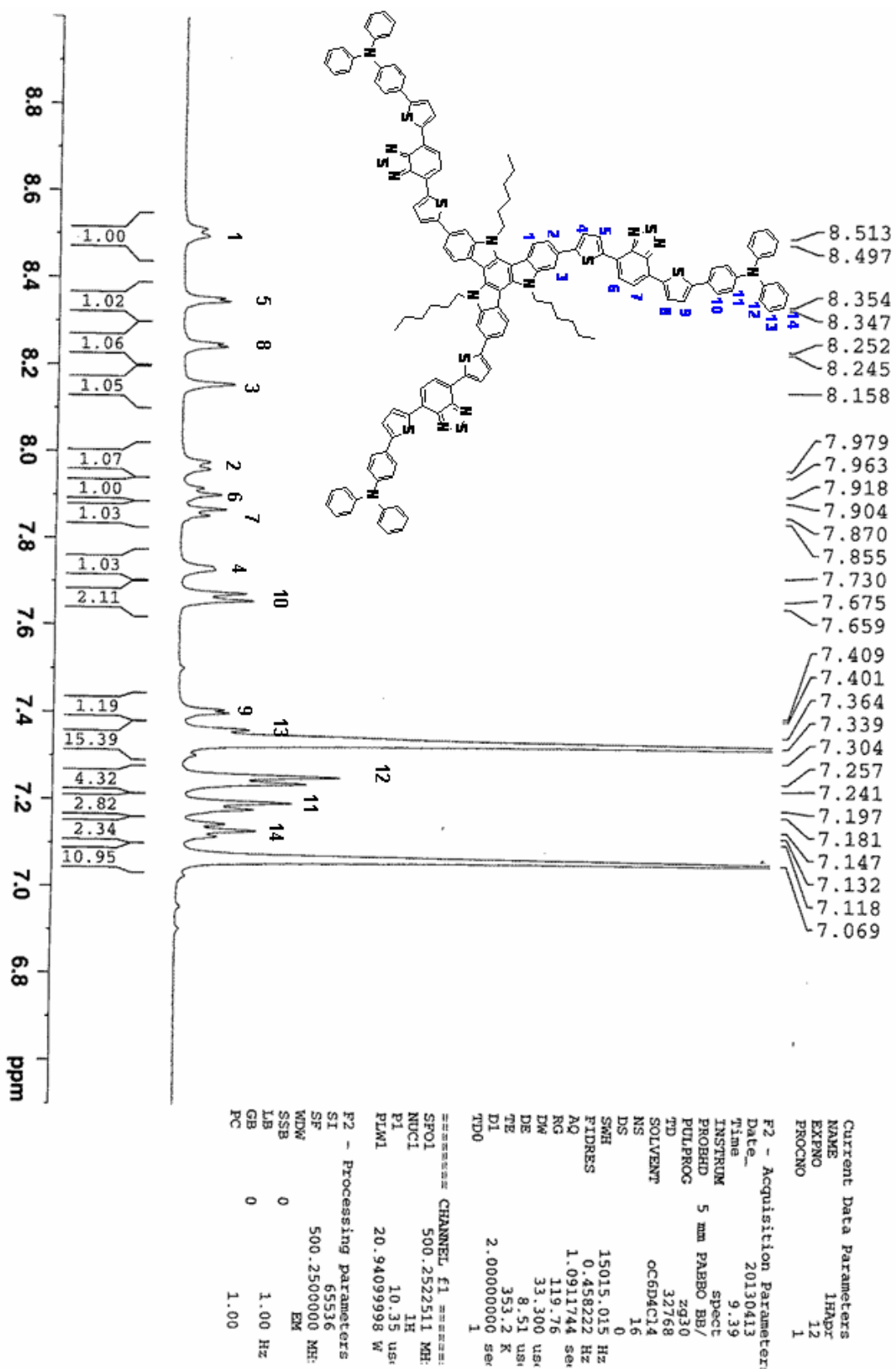


Figure S6. ¹H NMR spectrum of **SM-1** (measured in 1,2-dichlorobenzene-d₄ at 80 °C) and the assignment of the peaks.

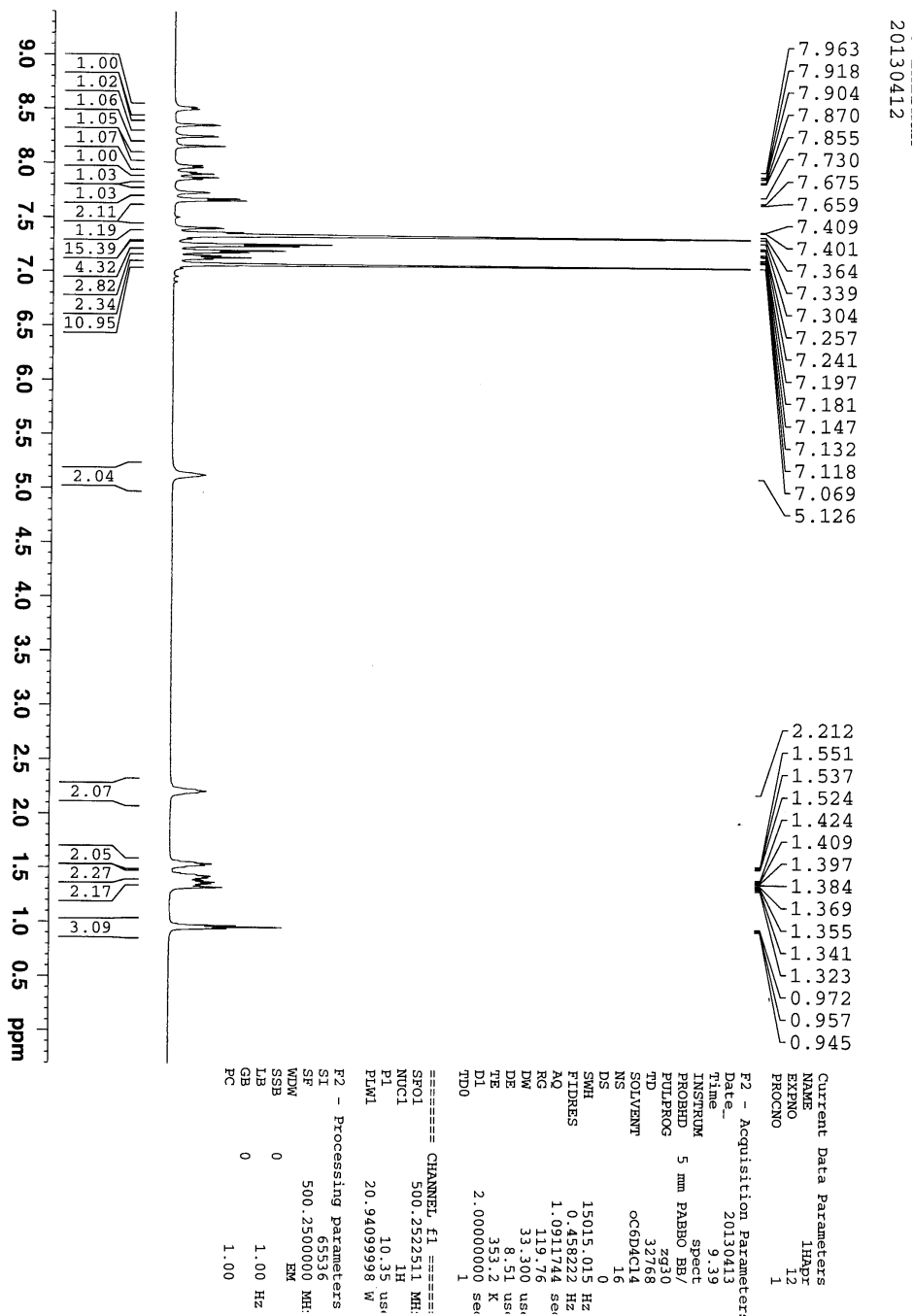


Figure S7. ^1H NMR spectrum of **SM-1** (measured in 1,2-dichlorobenzene- d_4 at 80 $^\circ\text{C}$).

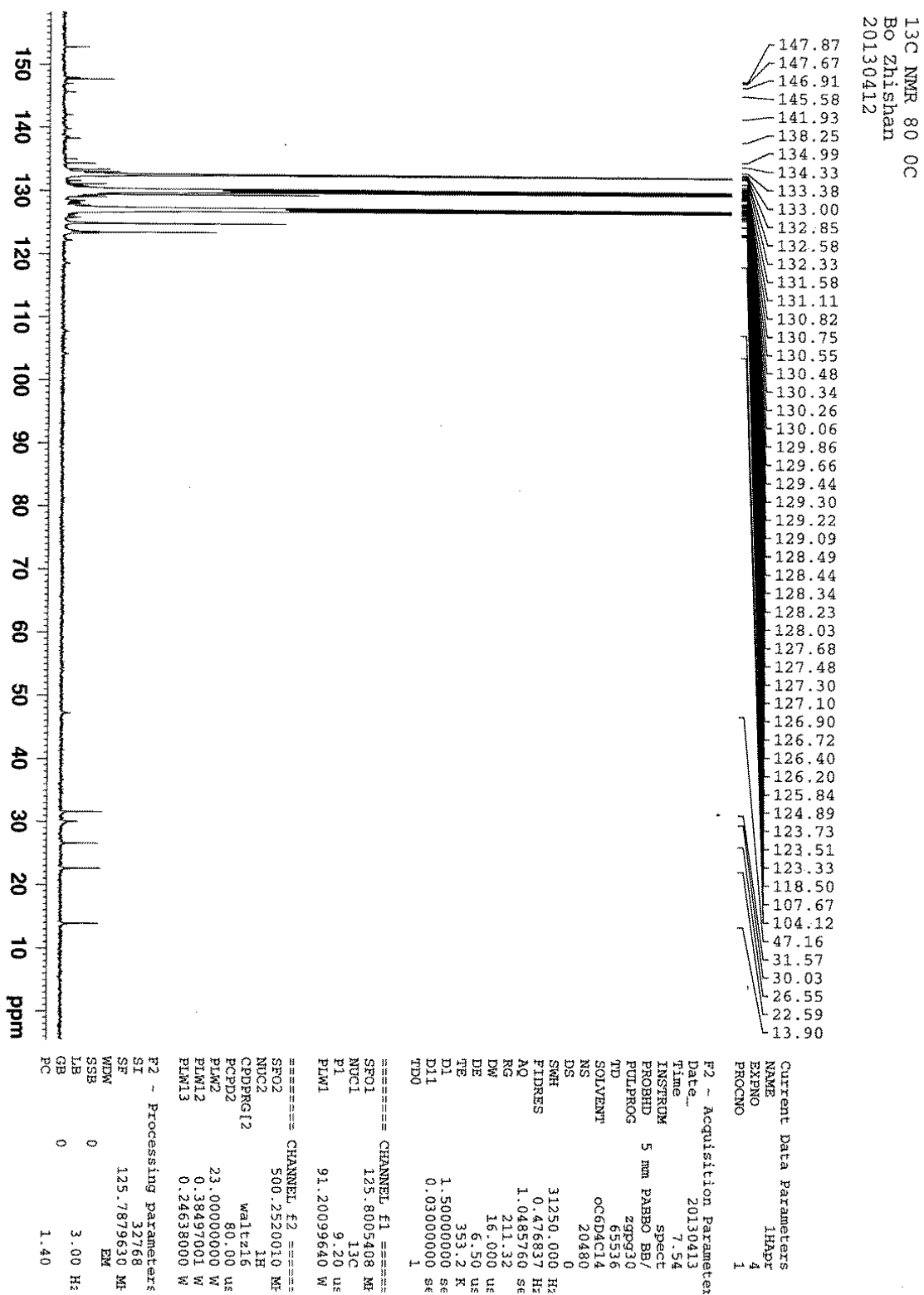


Figure S8. ¹³C NMR spectrum of SM-1 (measured in 1,2-dichlorobenzene-d₄ at 80 °C).