

Electronic Supporting Information

Dimensionally Integrated Nanoarchitectonics for Novel Composite from 0D, 1D, and 2D Nanomaterials: RGO/CNT/CeO₂ Ternary Nanocomposite with Electrochemical Performance

Raja Rajendran,^{a,b} Lok Kumar Shrestha,^{*a} Kosuke Minami^a, Munisamy Subramanian,^b Ramasamy Jayavel,^b and Katsuhiko Ariga^a

^a International Center for Materials Nanoarchitectonics (WPI-MANA), National Institute for Materials Science (NIMS), 1-1 Namiki, Tsukuba, Ibaraki 305-0044, Japan. Email:

SHRESTHA.Lokkumar@nims.go.jp

^b Centre for Nanoscience and Technology, Anna University, Chennai-600025, India.

Contents:

1. Additional TEM images of CNT/CeO ₂ binary nanocomposite	S3
2. Additional TEM images of RGO/CNT/CeO ₂ ternary nanocomposite	S4
3. Additional HR-TEM images of RGO/CNT/CeO ₂ ternary nanocomposite	S5
4. TEM/EDS elemental mapping of RGO/CNT/CeO ₂ ternary nanocomposite	S6
5. CV curve of CeO ₂ nanocrystal	S7
6. Cyclic stability curve of RGO/CNT/CeO ₂ ternary composite	S8

1. Additional TEM images of CNT/CeO₂ binary nanocomposite

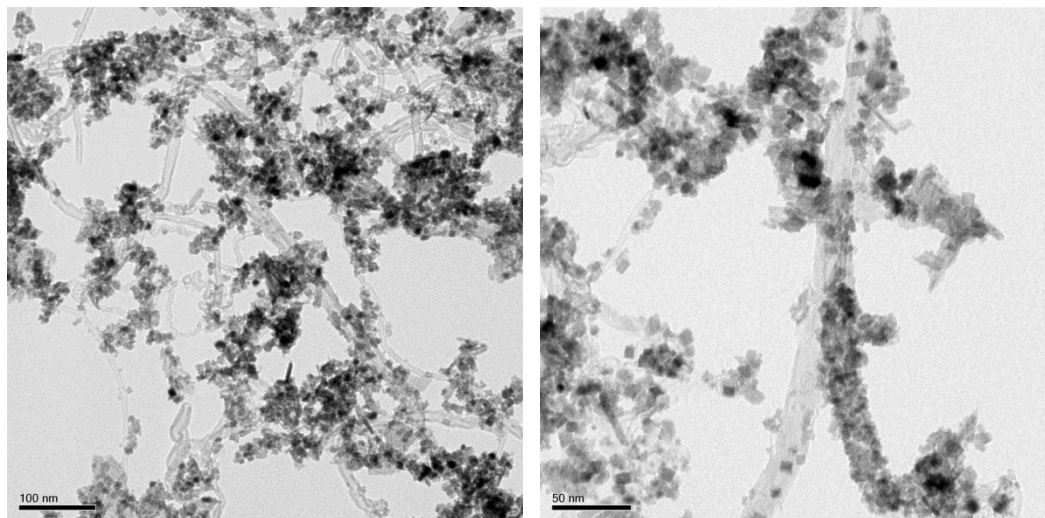


Fig. S1 TEM images of CNT/CeO₂ binary nanocomposite

2. Additional TEM images of RGO/CNT/CeO₂ ternary nanocomposite

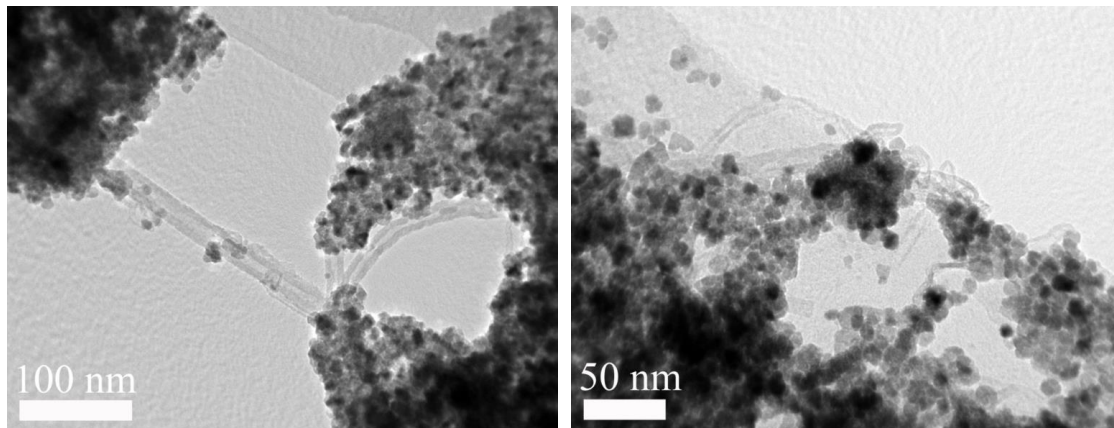


Fig. S2 TEM images of RGO/CNT/CeO₂ ternary nanocomposite

3. Additional HR-TEM images of RGO/CNT/CeO₂ ternary nanocomposite

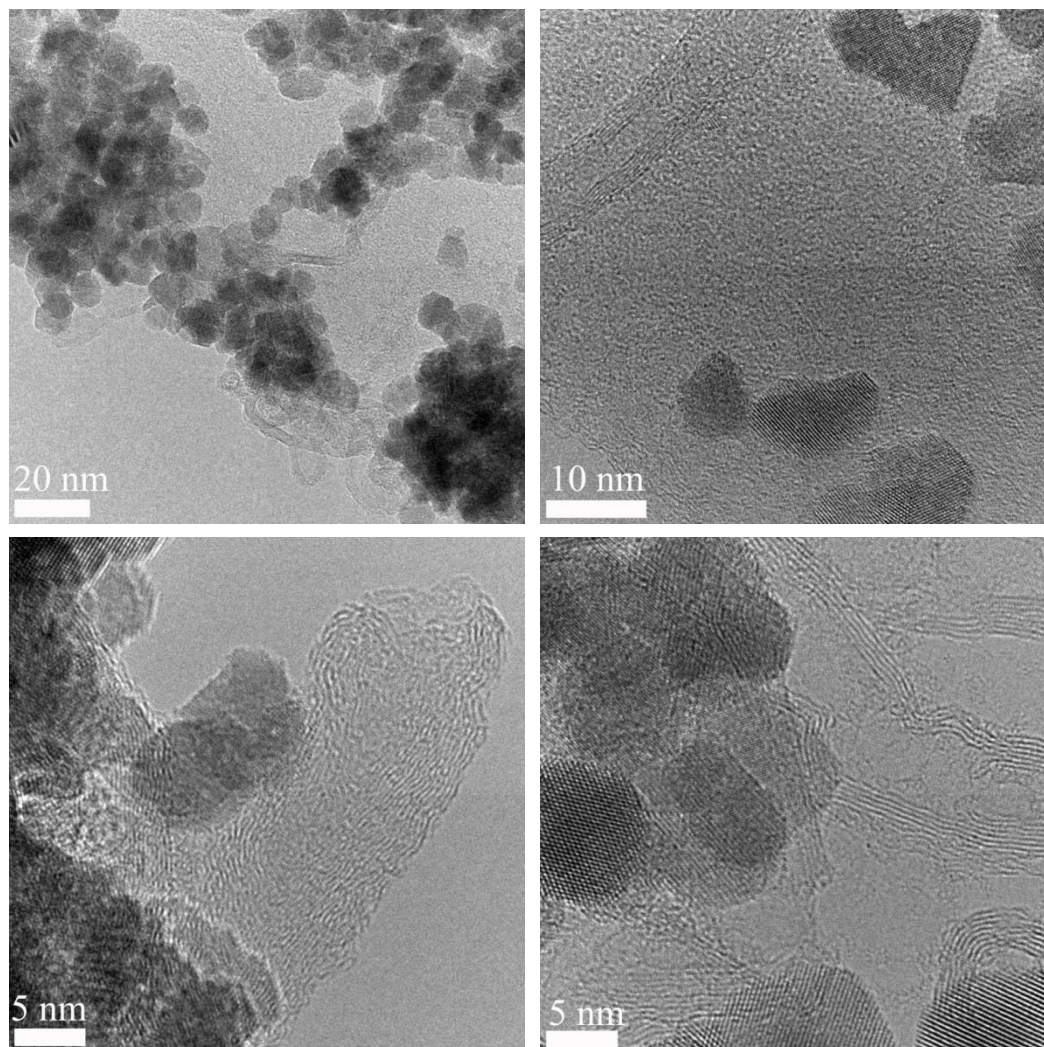


Fig. S3 HR-TEM images of RGO/CNT/CeO₂ ternary nanocomposite

4. TEM/EDS elemental mapping of RGO/CNT/CeO₂ ternary nanocomposite

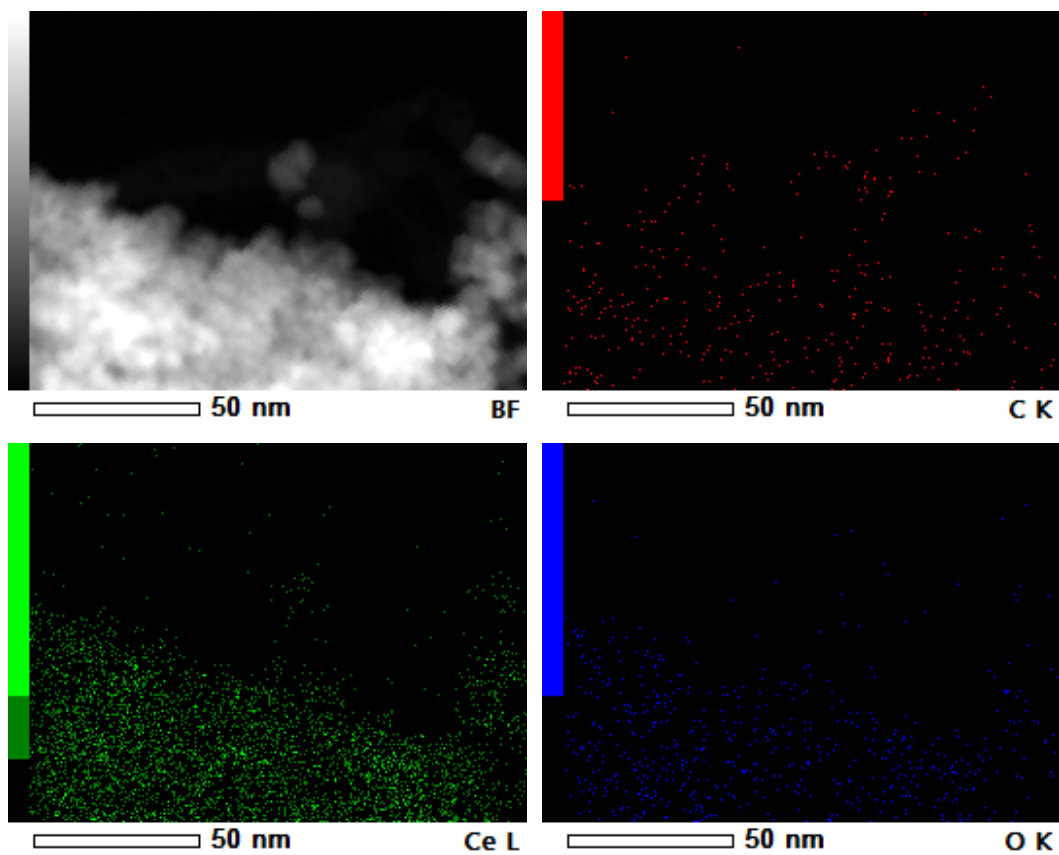


Fig. S4 TEM/EDS elemental mapping of RGO/CNT/CeO₂ ternary nanocomposite

5. CV curve of CeO₂ nanocrystal

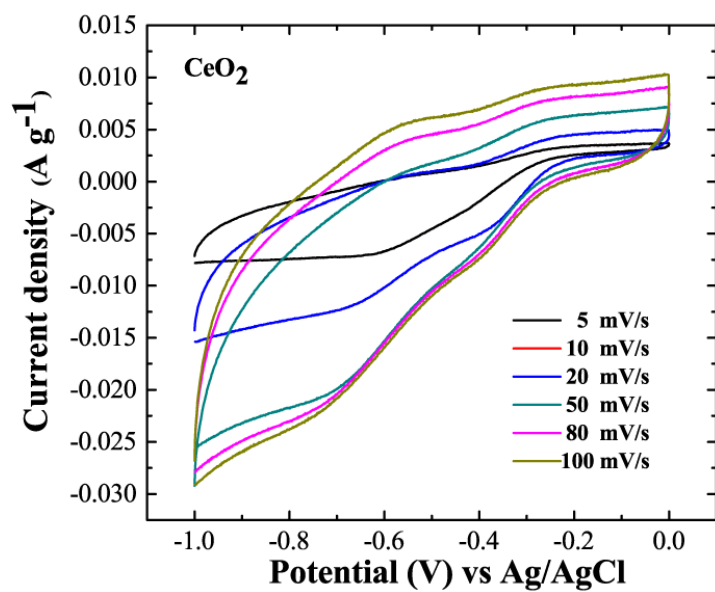


Fig. S5 CV curves of CeO₂ nanocrystals at different scan rates in 1M Na₂SO₄ solution

6. Cyclic stability curve of CeO_2 , CNT/CeO_2 , $\text{RGO}/\text{CNT}/\text{CeO}_2$

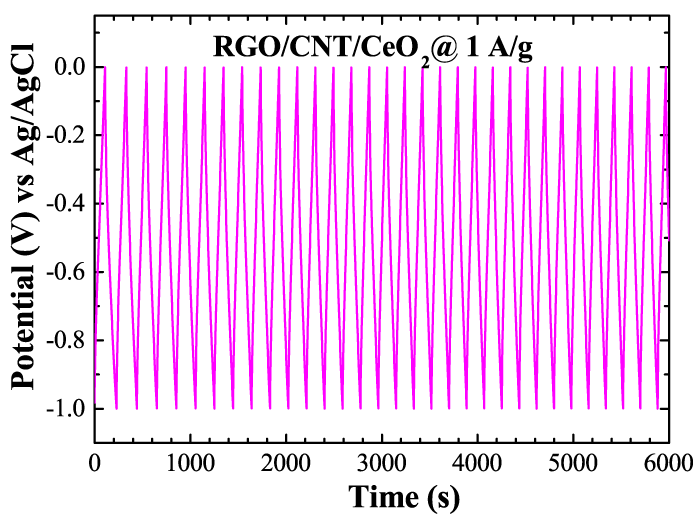
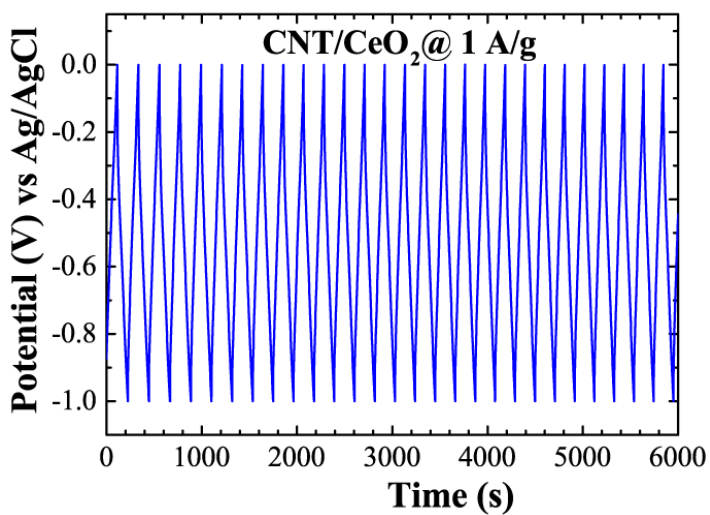
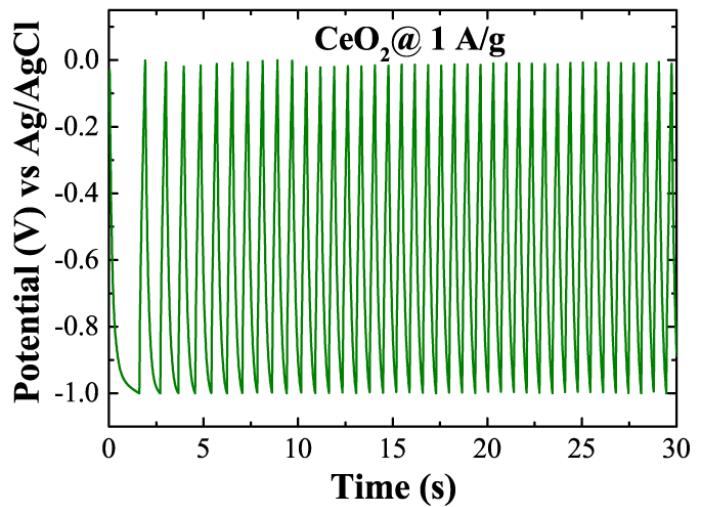


Fig. S6 Cycle life curve of CeO_2 (top), CNT/CeO_2 (middle), $\text{RGO}/\text{CNT}/\text{CeO}_2$ (bottom) at current density of 1 A/g