

Supplementary Materials

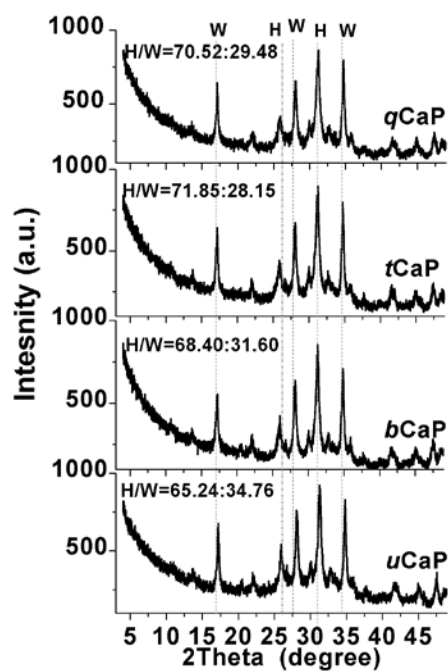


Figure S1. XRD patterns of the trace element-codoped CaP obtained from the teSBF in the presence of 20 μM PAsp after ageing for 240 min. The H/W ratio indicates the hydroxyapatite/whitlockite ratio in the powders according to the Rietveld refinement analysis. H: hydroxyapatite; W: whitlockite.

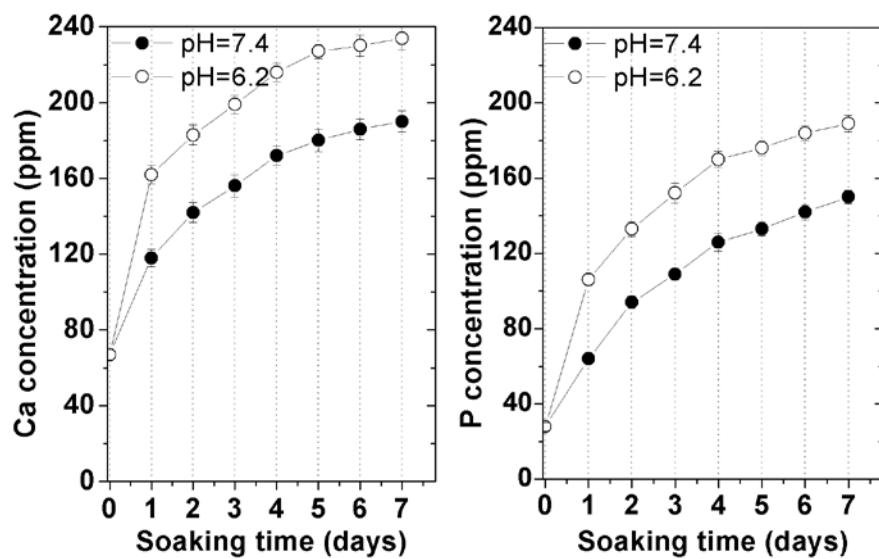


Figure S2. The Ca and P concentration measurement by ICP analysis of DMEM media (with different initial pH) during immersing *q*CaP powders for various time stages.

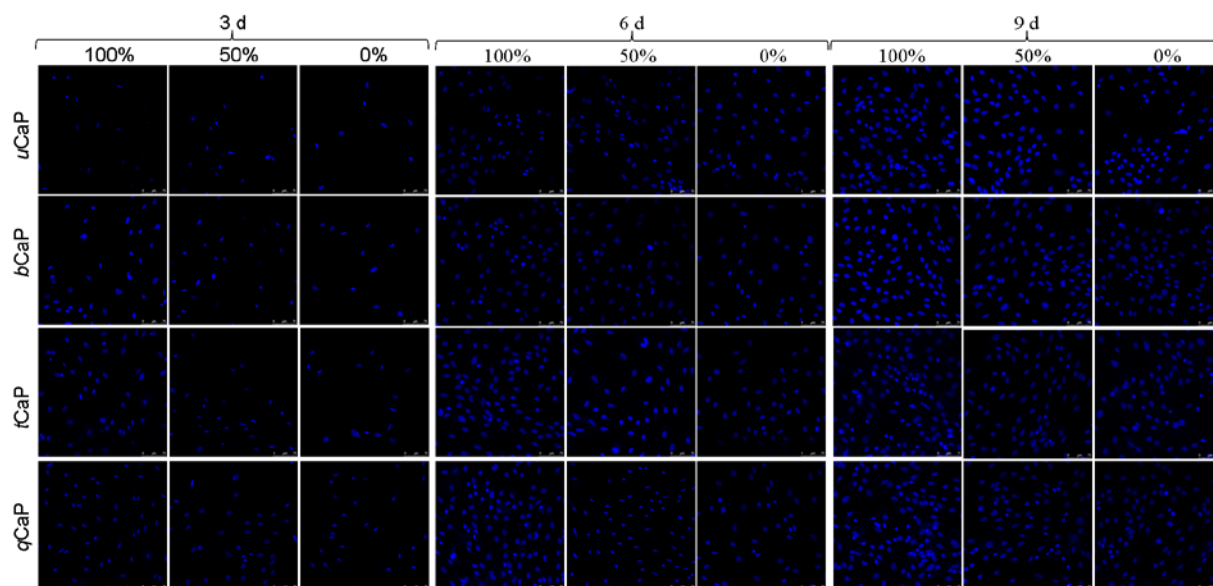


Figure S3. Effect of ionic extraction of different CaPs on rOMSC activity. DAPI staining were assessed after 3 d, 6 d, and 9 d. Cell numbers in all groups increased steadily with culture time and the *qCaP* group showed the most of cell quantity at each time point.