

Biomimetic and molecular level-based silicate bioactive glass-gelatin hybrid implants for loading-bearing bone fixation and repair

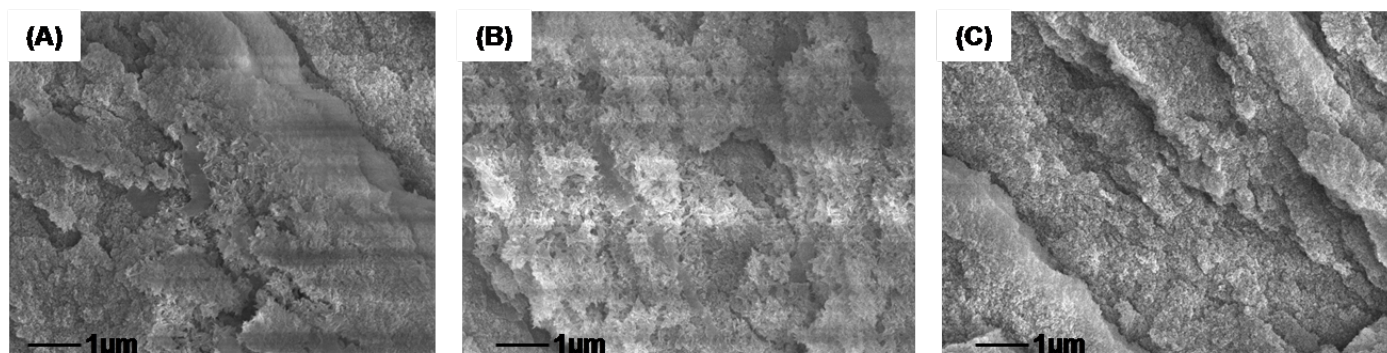
Bo Lei ^{a*}, Ling Wang ^a, Xiaofeng Chen ^b, Su-Kyoung Chae ^c

^a Center for Biological Engineering and Regenerative Medicine (CBERM), Frontier Institute of Science and Technology, Xi'an Jiaotong University, Xi'an, China

^b School of Materials Science and Engineering, South China University of Technology, Guangzhou, China

^c Harvard-MIT Division of Health Sciences and Technology, Massachusetts Institute of Technology, Cambridge, MA, USA

Supporting Information



Figures 1. SEM images of S4GT6 (A), S5GT5 (B), S6GT4 (C) hybrid implants after soaking in SBF for 7 days.