

Supplementary data: Synthesis of biocompatible Au-ZnTe core/shell nanoparticles.

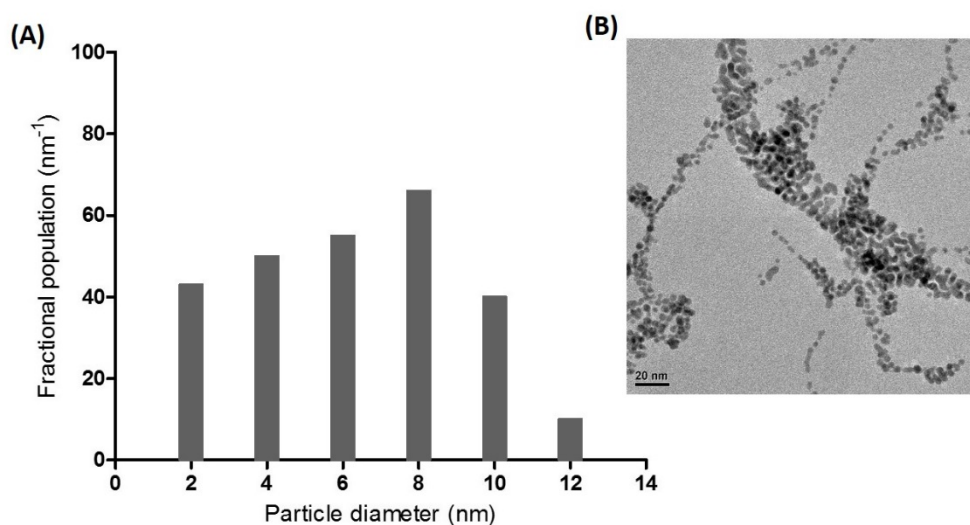


Figure 1. (A) Size distribution of Au-ZnTe core shell nanoparticles highlighting particles within the 2-10 nm range. The average size of the particles is 7 nm, SD \pm 3.74 nm. (B) TEM micrograph of Au-ZnTe nanoparticles showing uniform, spherical morphology.

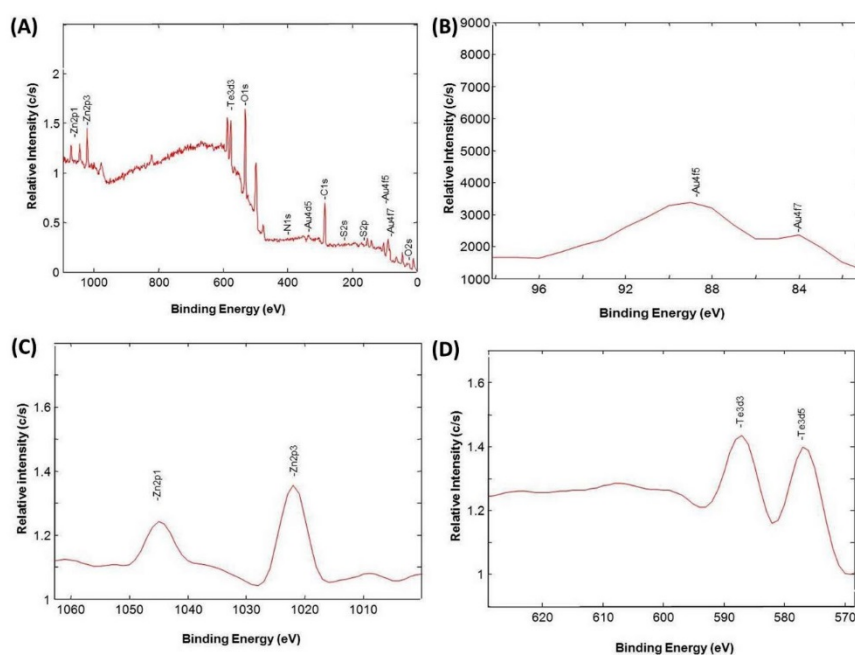


Figure 2. (A) XPS spectrum of Au-ZnTe core shell nanoparticles. (B) Binding energy spectrum of Au. (C) Binding energy spectrum of Zn. (D) Binding energy spectrum of Te.

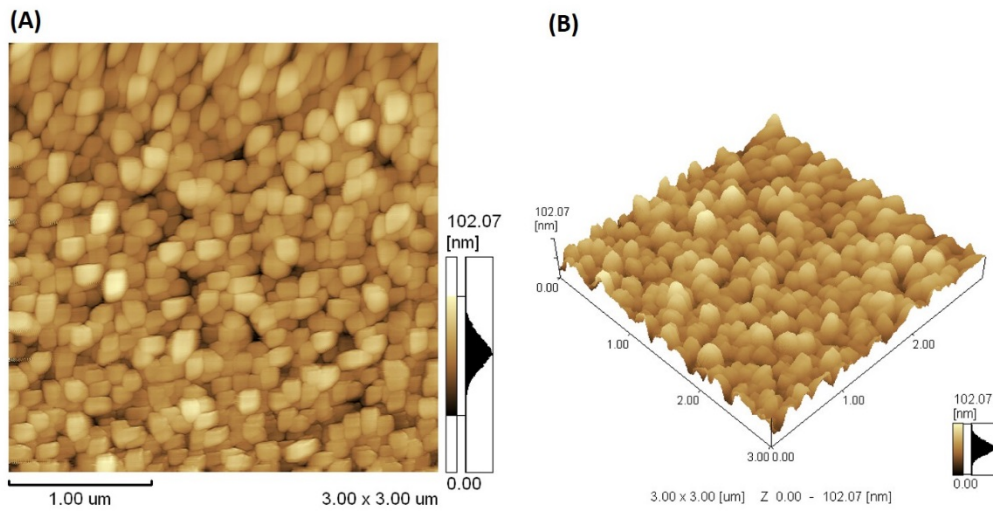


Figure 3. (A) Two dimensional image of Au-ZnTe core/shell nanoparticles showing uniform arrangement of nanoparticles (B) Three dimensional image of Au-ZnTe core/shell nanoparticles showing uniform surface height.