

Supporting Information

Photochemical synthesis of pyrene perfluoroalkyl derivatives and their embedding in a polymethylmethacrylate matrix. A spectroscopic and structural study.

**Ivana Pibiri,^{a,b,*} Silvestre Buscemi,^a Antonio Palumbo Piccionello,^{a,b} Maria Luisa Saladino,^{a,*}
Delia Chillura Martino,^{a,c} Eugenio Caponetti.^{a,d}**

^a Dipartimento di Scienze e Tecnologie Biologiche, Chimiche e Farmaceutiche, Università degli Studi di Palermo, Viale delle Scienze – Parco d’Orleans II, Ed. 17, I-90128 Palermo, Italy. E-mail: ivana.pibiri@unipa.it

^b Istituto EuroMediterraneo di Scienza e Tecnologia (IEMEST), Via Emerico Amari 123, 90139, Palermo, Italy.

^c Consorzio Interuniversitario Nazionale per la Scienza e Tecnologia dei Materiali (INSTM), UdR di Palermo, Viale delle Scienze – Parco d’Orleans II, Ed. 17, I-90128 Palermo, Italy.

^d Centro Grandi Apparecchiature-UniNetLab, Università di Palermo, Via F. Marini 14, I-90128 Palermo, Italy.

Contents

UV Experiments.....	S1
Photoluminescence Experiments.....	S2
Chromaticity coordinates.....	S3-S6
SAXS Experiments.....	S7
TEM Experiments.....	S8-S10
TGA Analysis.....	S11

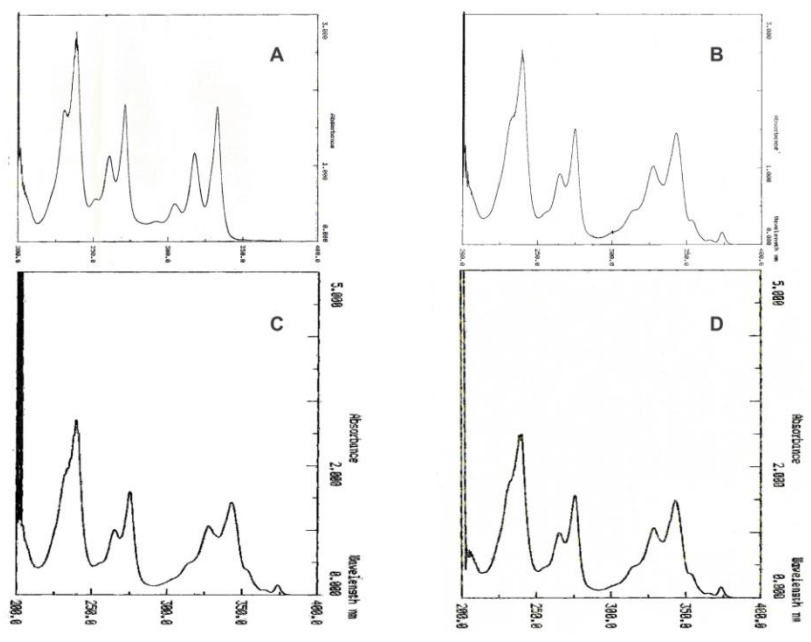


Figure S1. UV spectra for pyrene **1** (A) and its derivatives **2a** (B), **2b** (C), **2c** (D) in CH₃OH solutions.

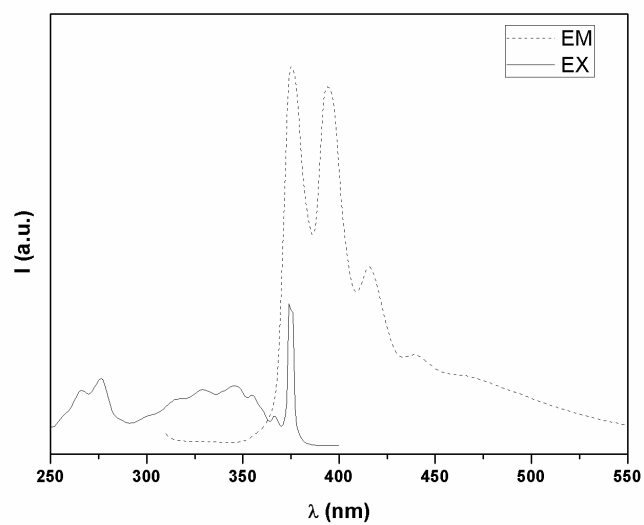


Figure S2. Excitation and overlapped Emission spectra for compound **2a** in CH₃OH solution.

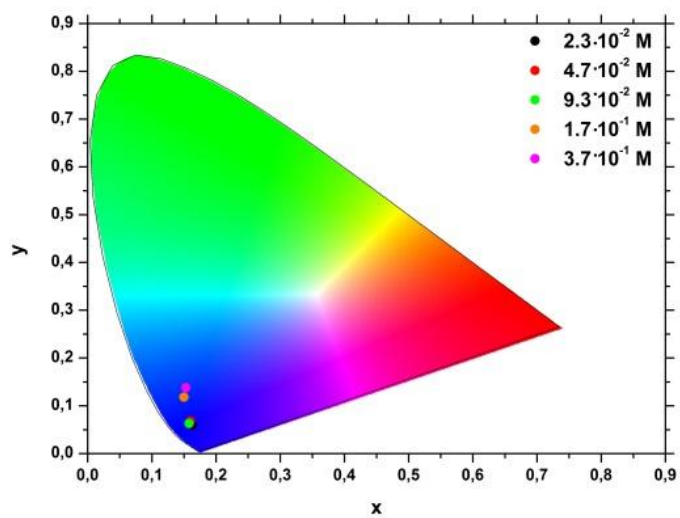


Figure S3. Chromaticity coordinates of the **1/PMMA** composites.

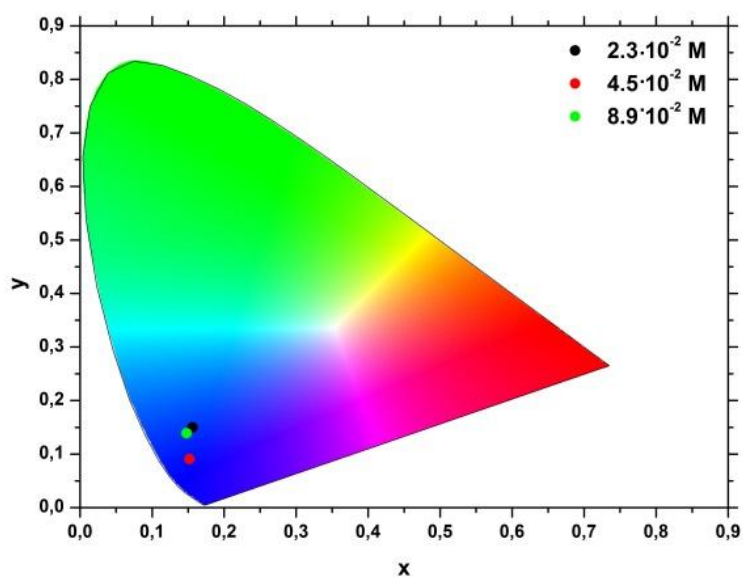


Figure S4. Chromaticity coordinates of the **2a/PMMA** composites.

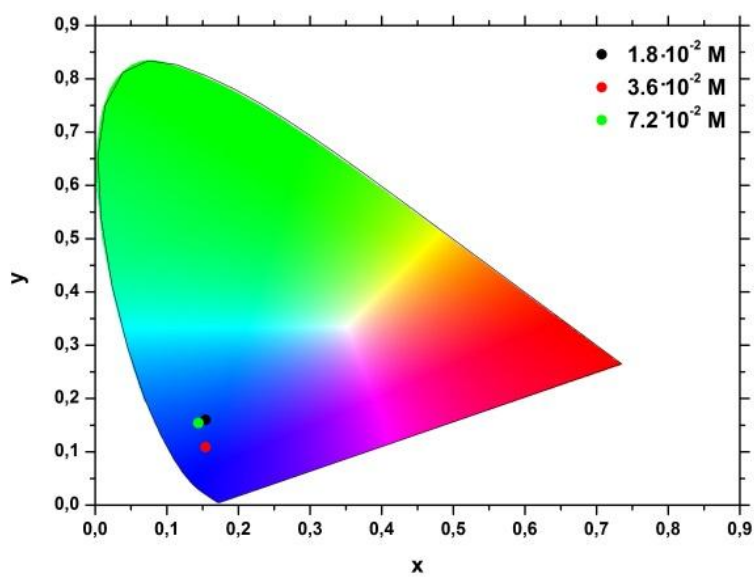


Figure S5. Chromaticity coordinates of the **2b/PMMA** composites.

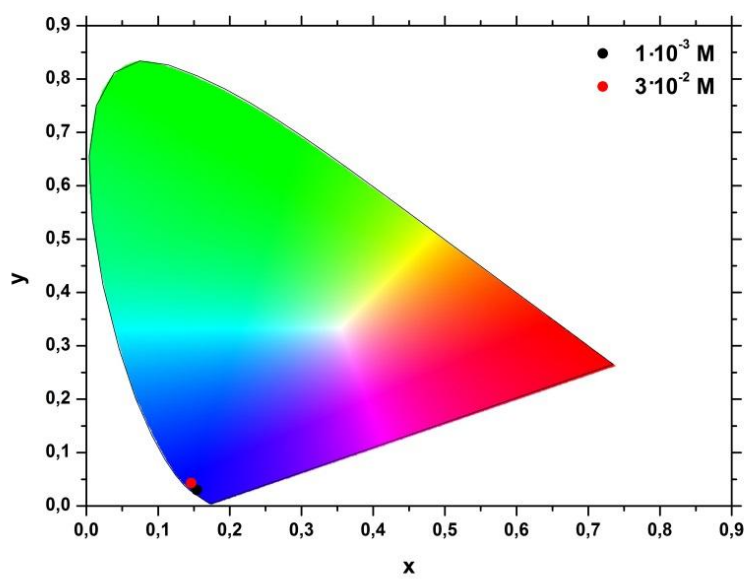


Figure S6. Chromaticity coordinates of the **2d/PMMA** composites.

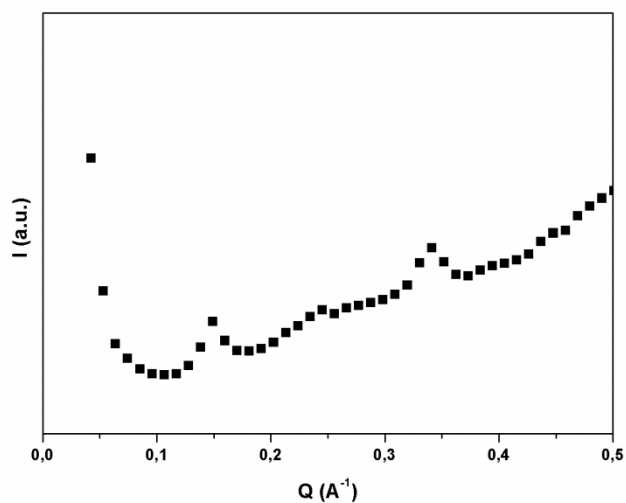


Figure S7. SAXS data for sample **2c/PMMA** $6.4 \cdot 10^{-2}$ M.

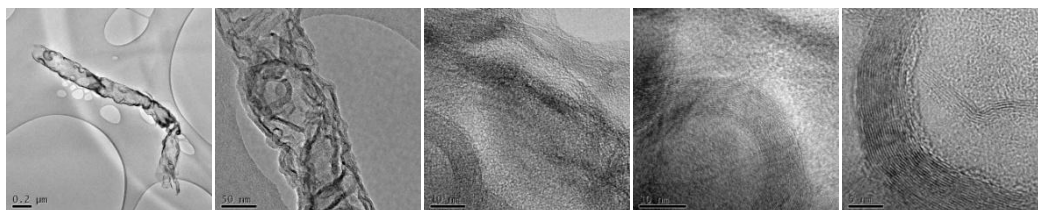


Figure S8. TEM micrographs for **1/PMMA** (1%) at (from left to right) 8000X, 60000X, 300000X, 400000X, 600000X respectively.

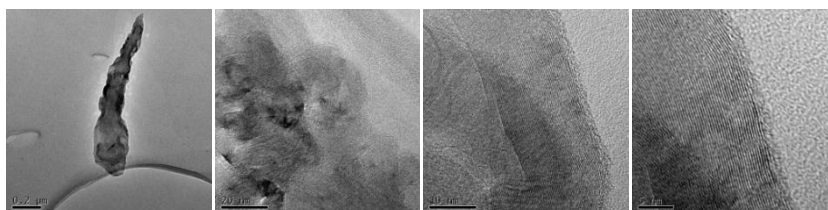


Figure S9. TEM micrographs for **2b/PMMA** (2%) at (from left to right) 120000X, 200000X, 400000X, 600000X respectively.

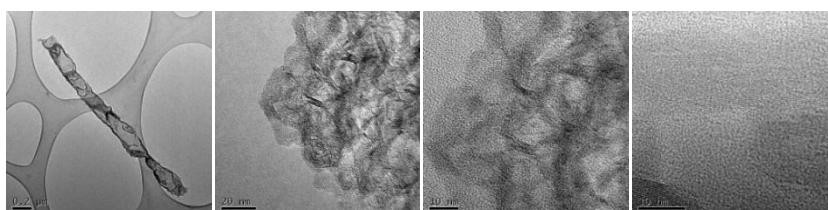


Figure S10. TEM micrographs for **2c/PMMA** (4%) at (from left to right) 8000X, 150000X, 250000X, 400000X respectively.

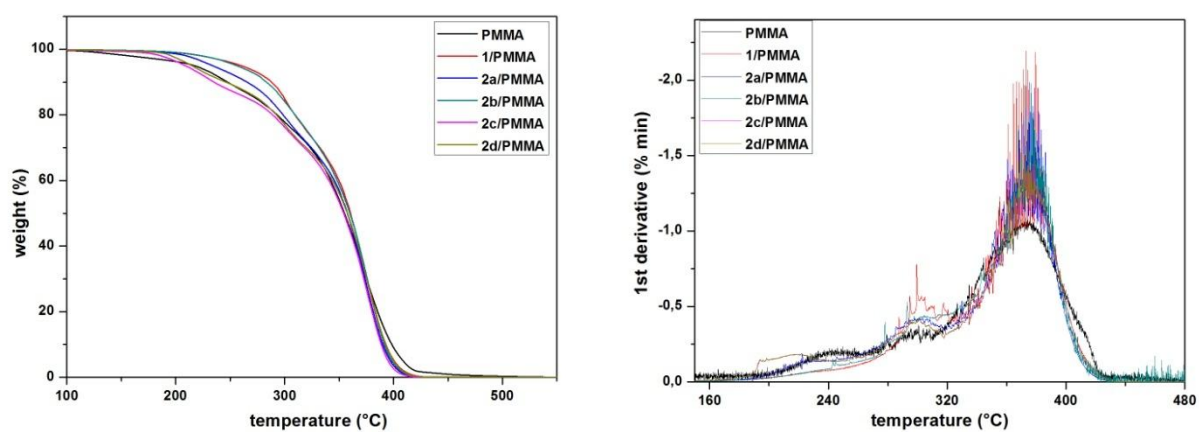


Figure S11. TGA and DTG curves of **PMMA**, $2.33 \cdot 10^{-2} \text{M}$ **1/PMMA**, $2.3 \cdot 10^{-2} \text{M}$ **2a/PMMA**, $3.6 \cdot 10^{-2} \text{M}$ **2b/PMMA**, $3 \cdot 10^{-2} \text{M}$ **2c/PMMA** and $3 \cdot 10^{-2} \text{M}$ **2d/PMMA**.